



COMMUNITY DEVELOPMENT FINANCE AUTHORITY

SUPPORTING THE CREATION OF STRONG,
RESILIENT AND VIBRANT COMMUNITIES



MISSION

Maximizing the value and impact of community development, economic development and clean energy initiatives throughout New Hampshire.



VISION

We see a future New Hampshire whose communities are economically and socially resilient, reflect and respect their natural surroundings, and are places where people want to live, work and play.



VALUES

Accountability
Collaboration
Adaptability
Equity
Focus
Respect

CDFA State Fiscal Year 2023 Impacts






\$29.78 million infused into New Hampshire communities

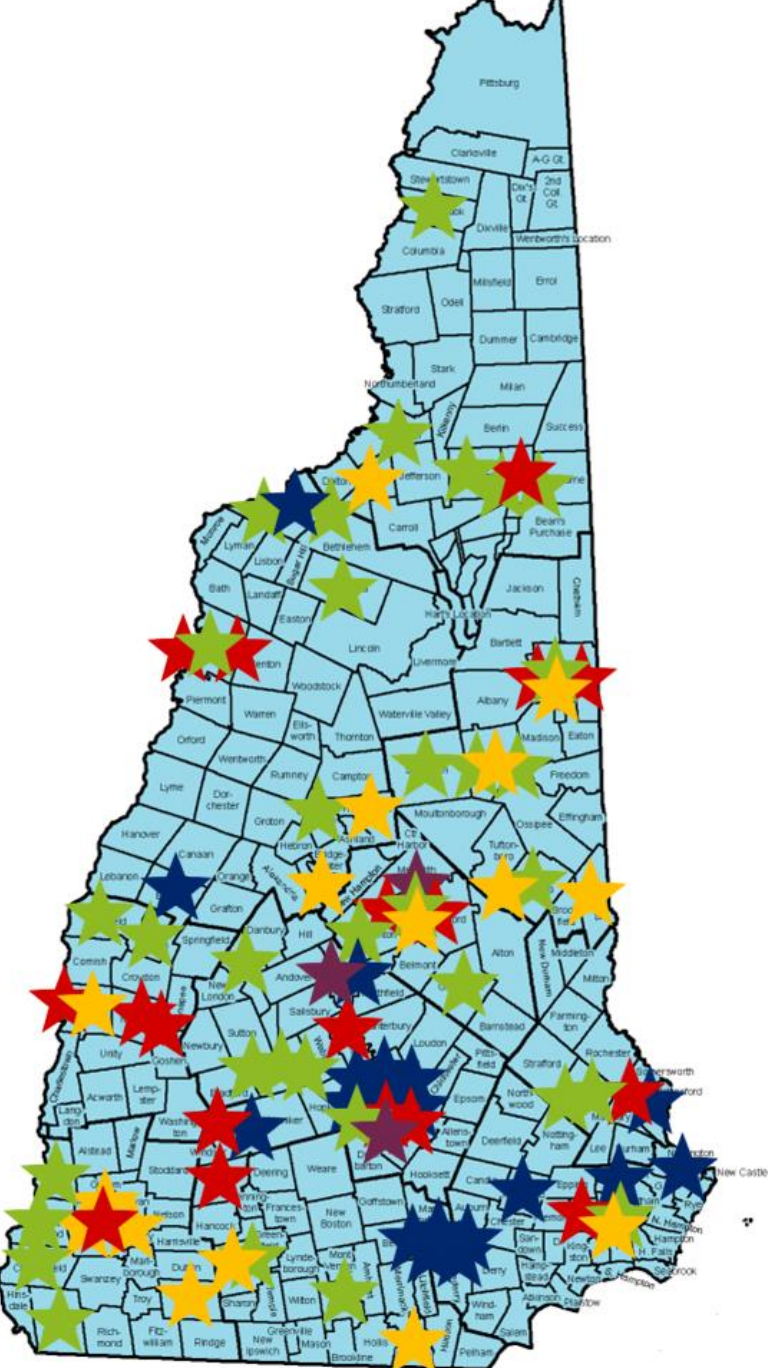
97 community-based initiatives supported

122 business donors engaged

Initiatives supported by CDFA reported the following impacts:

- Assisted **41,123 people**
- Rehabbed, preserved or created **203 housing units**
- Created or retained **240 jobs**
- Supported **241 micro businesses**
- Developed or rehabbed **13,180 square feet**

	Tax Credit Program		Clean Energy Fund
	Community Development Block Grant Program		Community Center Investment Program
			Pre-Development Loan Program





Early childhood and out of school care – which are essential components for thriving, healthy children and families – is prioritized, resourced, and accessible to all who seek it.

**VISION FOR CHILD CARE IN
NEW HAMPSHIRE**

FAMILY-BASED CARE SUPPORTS



CDFA
COMMUNITY DEVELOPMENT FINANCE AUTHORITY

FAMILY-BASED CARE SUPPORTS

Pilot program will focus on engaging new and existing family-based child care providers to deliver services and support.

- Assess the health and readiness of the provider for start-up or expansion
- Deliver business technical assistance and training
- Create connections to sector-specific resources for training and mentoring
- Resource organizations providing leadership in supporting providers in each of the seven Early Childhood Regions
- Focus intentionally on a community-based, culturally grounded and equity-centered service delivery
- Referral to start-up or expansion funding grant program

Outreach and engagement will be focused specifically on new and existing family-based providers.

STATEWIDE RESOURCES

CDFA is developing resources and materials to be utilized statewide in supporting family child care providers in 2024 and beyond.

Resources for
Start-up or
Expansion

Connections to
Statewide
Resources

Research &
Policy
Improvements

Start-up Guide
& Feasibility
Framework

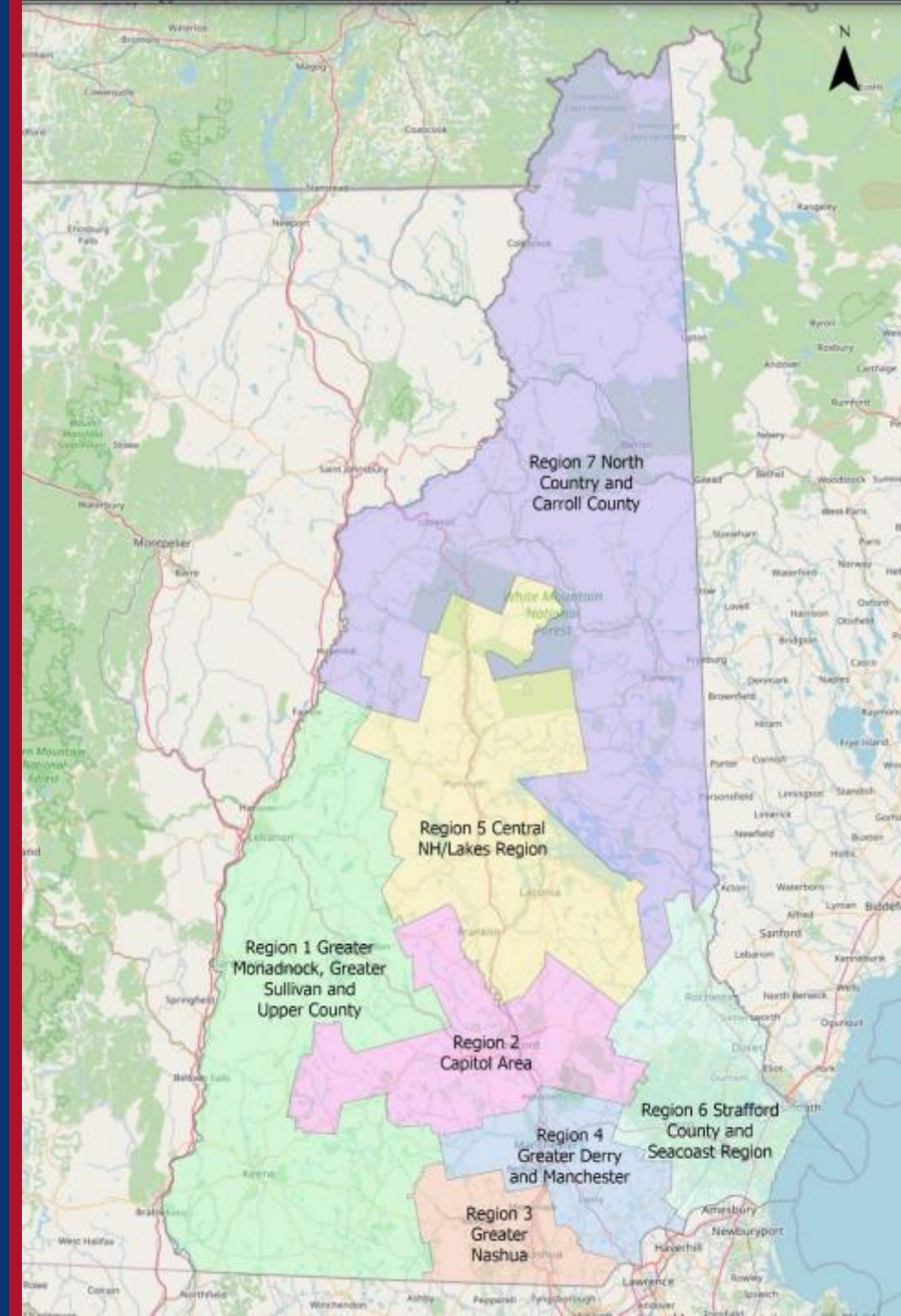
Business Health Assessment

COMMUNITY-BASED RESOURCES

Capitalize on the momentum of programs that are demonstrating progress towards supporting family child care providers today while informing long-term solutions and service delivery models.

Key components

- Outreach and engagement with family child care providers
- Connecting to Community Partners and Community Anchors
- Navigating Business and Quality Supports



FAMILY-BASED CARE SUPPORTS



**Community
Partners**



**Business &
Quality
Support
Providers**



**Community
Anchors**



HOW TO APPLY

Applications are due via CDFA's Grants Management System on March 20, 2024.

Grants ranging from \$50,000 to \$120,000 per Early Childhood region served

Interested in a pre-application meeting?

Email Carolyn Saunders at csaunders@nhcdfa.org